

mode
performance

AUTO PRODUCT CATALOGUE



INTRODUCTION

MODE PERFORMANCE WAS FORMED IN DECEMBER 2008 WITH ITS KEY PERSONNEL BRINGING OVER 40 YEARS OF COMBINED EXPERIENCE WITHIN BOTH 2 AND 4 WHEEL RACING CATEGORIES.

We are the sole Official Importer of Brembo Racing products for the UK, covering all aspects of motorsport.

We have a vast range of all products on the shelf for immediate delivery from our premises located in the prime position within the Silverstone Circuit – the home for both the British Grands Prix.

CONTACT INFORMATION

STEVE TUCKEY
Motorsport Division
M: 07889 511 830

Unit 6, Silverstone Technology Park,
Silverstone Circuit,
Northamptonshire,
NN12 8TN.

T: +44 (0)1327 855 999
F: +44 (0)1327 855 700
E: steve@modeperformance.co.uk





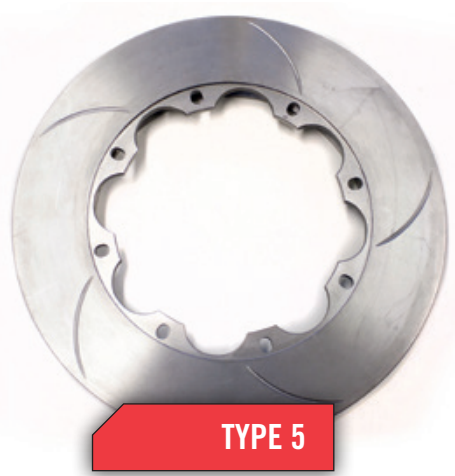
PORSCHE 996 & 997 GT3



STANDARD



TYPE 3



TYPE 5

STANDARD

SIZE	GROOVE PATTERN	ANNULUS	AIR GAP	WEIGHT	VENTILATION	OFFSET	NO. OF FIXINGS	INSIDE DIA	FLANGE THICKNESS	PART NO.	APPLICATION
278 x 16mm	Standard	45.25mm	6.5mm	2.7kg	Pillar	8.5mm	8	187.5mm	4.5mm	09.8386.15	F3 - Wide Annulis
278 x 16mm	Standard	40.25mm	6.5mm	2.45kg	Pillar	8.5mm	8	197.5mm	4.5mm	09.8386.16	F3 - Narrow Annulis
295 x 28mm	Standard	52.5mm	14mm	5.1kg	48 vane	12.7mm	8	190mm	6mm	09.7277.10/20	Saloon Car/Rally 15" Wheels
320 x 28mm	Standard	52.5mm	16.5mm	5.2kg	48 vane	15.5mm	8	215mm	6mm	09.5682.50/60	General Use

TYPE 3

SIZE	GROOVE PATTERN	ANNULUS	AIR GAP	WEIGHT	VENTILATION	OFFSET	NO. OF FIXINGS	INSIDE DIA	FLANGE THICKNESS	PART NO.	APPLICATION
332 x 32mm	Type 3	53.5mm	16.5mm	6.5kg	48 vane	18.5mm	10	225mm	8mm	09.8666.70/80	Sportscar / GT
355 x 32mm	Type 3	53.5mm	17mm	7.4kg	72 vane	18.5mm	10	248mm	8mm	09.9306.11/21	Sportscar / GT
355 x 32mm	Type 3	53.5mm	17mm	7kg	48 vane	18.5mm	10	248mm	8mm	09.8673.13/23	Sportscar / GT
380 x 32mm	Type 3	52.5mm	17mm	7.9kg	72 vane	17.25mm	10	275mm	8mm	09.8528.74/84	Sportscar / GT
380 x 35mm	Type 3	52.5mm	17mm	9kg	72 vane	18.5mm	10	275mm	8mm	09.8528.78/88	Sportscar / GT

TD FIXING

SIZE	GROOVE	AIR GAP	WEIGHT	VENTILATION	OFFSET	NO. OF FIXINGS	INSIDE DIA	PART NO.	APPLICATION
278 x 18mm	5	8mm	-	48 vane	-	11	-	09.A261.11/21	F3 Front / Rear
328 x 28mm	5	8mm	-	24 vane	15mm	11	220mm	09.A261.30/40	F3 Front / Rear
355 x 32mm	5	8mm	-	24 vane	18.5mm	11	248mm	09.A261.13/23	F3 Rear Only



TD FIXING

TYPE 5

SIZE	GROOVE PATTERN	ANNULUS	AIR GAP	WEIGHT	VENTILATION	OFFSET	NO. OF FIXINGS	INSIDE DIA	FLANGE THICKNESS	PART NO.	APPLICATION
328 x 28mm	Type 5	54mm	16.5mm	5.3kg	48 vane	15mm	10	220mm	6mm	09.9226.10/20	General Use
355 x 32mm	Type 5	53.3mm	20mm	-	48 vane	18.5mm	10	248mm	8mm	09.A027.13/23	Rear GT
355 x 32mm	Type 5	64mm	17mm	8.35kg	72 vane	18.5mm	10	227mm	8mm	09.9306.30/40	Rally, Tarmac Front

PLAIN

SIZE	GROOVE PATTERN	ANNULUS	AIR GAP	WEIGHT	VENTILATION	OFFSET	NO. OF FIXINGS	INSIDE DIA	FLANGE THICKNESS	PART NO.	APPLICATION
278 x 6.4mm	None	45.5mm	0mm	1.8kg	Solid	3.2mm	5	187mm	5mm	08.4695.43	Hill Climb / Rear Disc - Floating Bobbin

PORSCHE 996 & 997 GT3 DISC ASSEMBLIES

(Complete assemblies comprise disc fitted with Brembo's GT spec heavy duty floating mount system to bespoke aluminium bell)

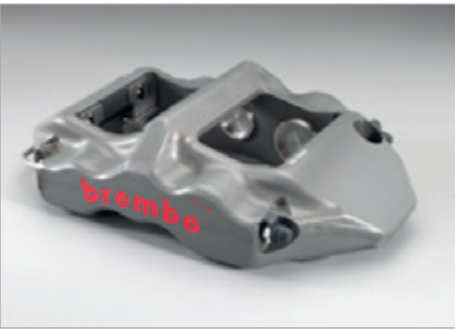
SIZE	GROOVE PATTERN	ANNULUS	AIR GAP	WEIGHT	VENTILATION	OFFSET	NO. OF FIXINGS	INSIDE DIA	FLANGE THICKNESS	PART NO.	APPLICATION
350 x 34mm	Type 3	68mm	17mm	9.3kg	72 vane	17.9mm	10	214mm	8mm	09.9306.10/20	996 GT3 Front (Disc Only)
										XA4.F2.11/12	996 GT3 Front (Complete Assembly)
330 x 28mm	Type 3	63mm	16.5mm	7.5kg	48 vane	17mm	10	204mm	8mm	09.8667.50/60	996 GT3 Rear (Disc Only)
										XA4.F2.21/22	996 GT3 Rear (Complete Assembly)
380 x 34mm	Type 3	65mm	20mm	9.46kg	72 vane	18.5mm	10	250mm	8mm	09.A009.12/22	997 GT3 Front (Disc Only)
										XA5.R7.11/12	997 GT3 Front (Complete Assembly)
350 x 28mm	Type 3	63mm	17mm	6.56kg	72 vane	15.5mm	10	224mm	6mm	09.9306.12/22	997 GT3 Rear (Disc Only)
										XA5.R7.21/22	997 GT3 Rear (Complete Assembly)



20.2945.01	2 Piston Caliper
PISTON SIZE:	38mm
SPARE PARTS:	
120.2252.20	Piston 38mm
105.7224.45	Seal 38mm
05.2812.13	Bleed Nipple
20.2258.10	Caliper Pin
20.4426.10	Dust Cover



XA2.E7.01/04	4 Piston Caliper (GT 4)
PISTON SIZE:	38/42mm
SPARE PARTS:	
20.A129.77	Piston 38mm
20.A129.79	Piston 42mm
105.7224.45	Seal 38mm
105.7224.47	Seal 42mm
05.2812.13	Bleed Nipple
X42.E7.20	Bridge Pipe



XA6.G1.01/04	6 Piston Caliper
BODY TYPE:	Monobloc/Aluminium
PISTON SIZE:	28/30/38mm
SPARE PARTS:	
105.7224.40	Seal 28mm
105.7224.41	Seal 30mm
105.7224.45	Seal 38mm
05.2812.13	Bleed Screw



22.5882.11/21	Handbrake Caliper
PISTON SIZE:	36mm
SPARE PARTS:	



20.4245.05/06	4 Piston Caliper
BODY TYPE:	Cast Aluminium
PISTON SIZE:	36/40mm
SPARE PARTS:	
20.3833.30	Piston 36mm
20.3833.20	Piston 40mm
105.7224.44	Seal 36mm
105.7224.46	Seal 40mm
05.2812.13	Bleed Nipple
20.4002.30	Spring
20.3832.52	Abutment Plate 36mm
20.3832.42	Abutment Plate 40mm



20.7662.77/87	4 Piston Caliper
BODY TYPE:	Aluminium
PISTON SIZE:	36/40mm
SPARE PARTS:	
20.5066.40	Piston
20.5066.60	Piston
105.5955.56	Seal 36mm
105.5955.58	Seal 40mm
05.2812.13	Bleed Nipple
20.4196.80	Spring
20.4872.44	Dust Cap
20.4872.46	Dust Cap



XA3.02.31/32	6 Piston Caliper
BODY TYPE:	Monobloc/Aluminium
PISTON SIZE:	30/32/40mm
SPARE PARTS:	
20.5909.73	Piston 30mm
20.5909.74	Piston 32mm
20.5909.78	Piston 40mm
105.7224.41	Seal 30mm
105.7224.42	Seal 32mm
105.7224.46	Seal 40mm
20.4002.23	Spring
05.2812.13	Bleed Screw



XA6.L6.11/12	2 Piston Caliper
BODY TYPE:	2 Piece/Aluminium
PISTON SIZE:	36mm
SPARE PARTS:	
105.7224.44	Seal 36mm
05.2812.13	Bleed Screw



20.5880.01/04	4 Piston Caliper (F50)
PISTON SIZE:	40/44mm
SPARE PARTS:	
20.7050.57	Piston 40mm
20.7050.59	Piston 44mm
105.5955.58/60	Seal 40/44mm
05.2812.13	Bleed Nipple
20.4872.46/48	Dust Seal 40mm/48mm
06.4518.28	Fluid Transfer Pipe
20.4908.50	Pad Pin
20.4196.76	Pad Spring
05.4542.21	R Clip
20.4517.54	Abutment Plate
05.4424.61	Abutment Plate Screws



XA5.T0.01/04	4 Piston Caliper
BODY TYPE:	Monobloc/Aluminium
PISTON SIZE:	38/44mm
SPARE PARTS:	
20.8650.57	Piston 38mm
20.8650.609	Piston 44mm
105.7224.45	Seal 38mm
105.7224.48	Seal 44mm
20.7268.80	Abutment Plate
20.4517.85	Abutment Plate
05.2812.13	Bleed Screw



XA5.D6.01/04	8 Piston Caliper
BODY TYPE:	Monobloc/Aluminium
PISTON SIZE:	26/32mm
SPARE PARTS:	
X99.D0.40	Piston 26mm
X99.D0.41	Piston 32mm
105.7224.39	Seal 26mm
105.7224.42	Seal 32mm
X99.D0.09	Abutment Plate
X99.D0.10	Abutment Plate



XA5.C2.01/02	6 Piston Caliper
BODY TYPE:	Monobloc/Aluminium
PISTON SIZE:	28/30/38mm
SPARE PARTS:	
105.7224.40	Seal 28mm
105.7224.41	Seal 30mm
105.7224.45	Seal 38mm
05.2812.13	Bleed Screw



XA4.F1.01/02	6 Piston Caliper
BODY TYPE:	Monobloc/Aluminium
PISTON SIZE:	28/30/38mm
SPARE PARTS:	
20.5909.72	Piston 28mm
20.5909.73	Piston 30mm
20.5909.77	Piston 38mm
105.7224.40	Seal 28mm
105.7224.41	Seal 30mm
105.7224.45	Seal 38mm
20.4002.23	Spring
05.2812.13	Bleed Screws



X97.24.01	2 Piston Caliper
BODY TYPE:	2 Piece Aluminium
PISTON SIZE:	38mm
SPARE PARTS:	
X97.24.64	Piston 38mm
105.7224.45	Seal 38mm
05.2812.13	Bleed Screw
X97.24.69	Clip
X97.24.13	Pin



107.A469.12 (B24.22.170)	
THICKNESS:	22mm
MATERIAL:	RB-170
APPLICATION:	6 Piston GT Narrow
CALIPER:	Brembo



107.A469.14 (B24.29.170)	
THICKNESS:	29mm
MATERIAL:	RB-170
APPLICATION:	6 Piston GT
CALIPER:	Brembo



107.A469.13 (B24.25.170)	
THICKNESS:	25mm
MATERIAL:	RB-170
APPLICATION:	6 Piston GT Forged
CALIPER:	Brembo



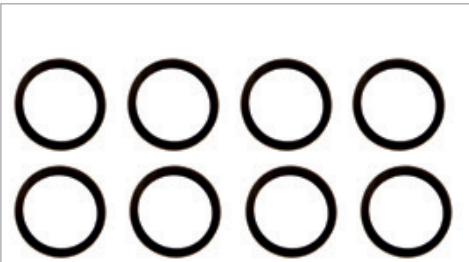
107.7275.40	
THICKNESS:	
MATERIAL:	
APPLICATION:	Mitsubishi Front
CALIPER:	



107.A469.06 (B13.26.170)	
THICKNESS:	26.5mm
MATERIAL:	RB-170
APPLICATION:	4 Piston Rear GT
CALIPER:	Brembo

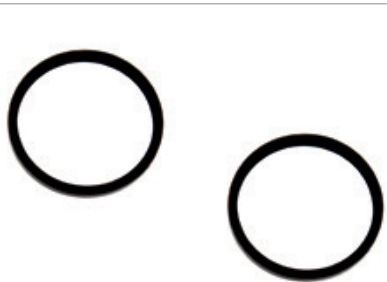


107.8342.11	
THICKNESS:	
MATERIAL:	
APPLICATION:	Mitsubishi Rear
CALIPER:	



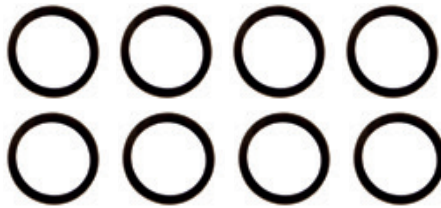
BRAKE SEAL KITS (8 PSC)

Part No:	Size:
105.5955.51	26mm
105.5955.52	28mm
105.5955.53	30mm
105.5955.54	32mm
105.5955.55	34mm
105.5955.56	36mm
105.5955.57	38mm
105.5955.58	40mm
105.5955.59	42mm
105.5955.60	44mm



SUBARU STI

Part No:	
120.3203.37	Front Seal Kit
120.3203.38	Rear Seal Kit



LOW DRAG BRAKE SEAL KITS (8 PCS)

Part No:	Size:
105.7224.39	26mm
105.7224.40	28mm
105.7224.41	30mm
105.7224.42	32mm
105.7224.43	34mm
105.7224.44	36mm
105.7224.45	38mm
105.7224.46	40mm
105.7224.47	42mm
105.7224.48	44mm



BRAKE DUST SEALS

Part No:	Size:
20.4872.40	28mm
20.4872.41	30mm
20.4872.42	32mm
20.4872.43	34mm
20.4872.44	36mm
20.4872.45	38mm
20.4872.46	40mm
20.4872.47	42mm
20.4872.48	44mm
20.4872.60	46mm



LCF 600 PLUS BRAKE FLUID

aPart No:	
04.8164.11	500ml Bottle
04.8164.01	Case of 20



HTC 64T BRAKE FLUID

Part No:	
04.8164.12	500ml Bottle
04.8164.02	Case of 20

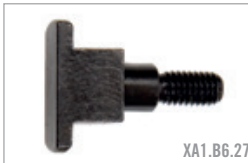


SCF SEAL CONDITIONING FLUID

Part No:	
04.8164.90	250ml

HEAVY DUTY BOBBINS

XA1.B6.27	Bobbin Heavy Duty 6mm Disc Flange
XA1.B6.29	Bobbin Heavy Duty 8mm Disc Flange



FIXING BOLTS

A1.08.34.103	Fixing Bolt (Floating Bobbin)
A1.08.34.105	Fixing Bolt (Floating Bobbin)



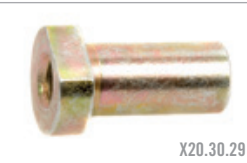
MOUNTING WASHERS

05.5793.20	Washer - Floating Mounting
A3.41.10.006	Washer - Heavy Duty - Carbon/Carbon
X90.02.47	Washer - Round Hole Disc Mounting



MOUNTING BUSHES

X20.30.29	Mounting Bush 8mm Disc Flange
X80.20.08	Mounting Bush 6mm Disc Flange
X80.20.09	Mounting Bush 4.5mm Disc Flange



K NUTS

XA1.B6.30	High Temp K Nut Heavy Duty / C-C
-----------	----------------------------------



SABELT CCS432 4 POINT SALOON HARNESS

BUCKLE
Points: 4
Type: STD long lever

SHOULDERS
Material: STD
Adjusters: Steel
Fixing: Snap Hook

LAP
Material: STD
Adjusters: Buflug
Fixing: Snap Hook
Pull: Up



SABELT CCS633 6 POINT SALOON HARNESS

BUCKLE
Points: 6
Type: STD short lever

SHOULDERS
Material: ZYT+STD
Adjusters: Steel
Fixing: Bolted 9mm

LAP
Material: ZYT+STD
Adjusters: Steel
Fixing: Bolted 9mm
Pull: Up

CRUTCHES
Material: STD
Adjusters: Tribar
Fixing on buckle: Loop
Fixing: Bolted



SABELT CCS633 SINGLE SEATER HARNESS

BUCKLE
Points: 6
Type: STD short lever

SHOULDERS
Material: STD
Adjusters: Steel
Fixing: Snap Hook

LAP
Material: STD
Adjusters: Steel
Fixing: Snap Hook
Pull: Up

CRUTCHES
Material: STD
Adjusters: Tribar
Fixing on buckle: T
Fixing: Snap Hook



SABELT CCS652 6 POINT SINGLE SEATER HARNESS HANS

BUCKLE
Points: 6
Type: STD short lever

SHOULDERS
Material: STD
Adjusters: Steel
Fixing: Loop

LAP
Material: STD
Adjusters: Buflug
Fixing: Bolted 9mm
Pull: Up

CRUTCHES
Material: STD
Adjusters: Tribar
Fixing on buckle: Loop
Fixing: Bolted



SABELT CCA653 6 POINT SALOON HANS

BUCKLE
Points: 6
Type: STD short lever, carbon cover

SHOULDERS
Material: STD
Adjusters: Aluminium
Fixing: Snap Hook

LAP
Material: STD
Adjusters: Buflug
Fixing: Snap Hook
Pull: Up

CRUTCHES
Material: STD
Adjusters: Tribar
Fixing on buckle: T
Fixing: Snap Hook



SABELT GT-100

GT-100 is the result of a unique and innovative technology applied to racing seats. The resin is injected by a computer software at high temperature directly on a pre-formed ABS shell. The result is a two-layer shell: the inner part is fiberglass, precisely injected layer high protective structure. While the visible, external, is glossy, anti-scratch



SABELT GT-140

Gel-coated fiberglass shell. Higher sides for a better lateral support. 5 harnesses slots. Standard removable cushions.

- Side fixing
- HANS® compatible
- FIA approved



SABELT GT-160

Gel-coated Fibreglass shell. Built-in head support. Higher sides for better lateral support. 5 harnesses slots. Double density memory form foam to improve comfort.

- Side fixing
- HANS® compatible
- FIA approved



SABELT GT-600

Sabelt GT-600Extra light carbon fiber shell, autoclave, dry fiber. Professional foam. Higher sides for a better lateral support. 5 harnesses slots. Double density memory form foam to improve comfort.

- Side fixing
- HANS® compatible
- FIA approved
- Red colour on request only



SABELT GT-610

Extra light carbon fiber shell, autoclave, pre-preg fiber. Built-in head support. Higher sides for a better lateral support. 5 harnesses slots. Double density memory form foam to improve comfort.

- Side fixing
- HANS® compatible
- FIA approved





SABELT UI-600 BALACLAVA

- Highly perspirant DeltaC
- Flat seams
- FIA 8856-2000 approved



SABELT UI-400 BALACLAVA

New mixed fabric with white stretch knitwear on the face and net fabric on the back for a better breathability and comfort.

- FIA 8856/2000 approved



SABELT UI-200 BALACLAVA

Perspirant Air Tex in soft knitwear with Micro Capsule menthol perfumed for fresh feeling.

- FIA 8856/2000 approved



SABELT UI-600 TOP & PANTS

- Highly perspirant DeltaC knitwear
- FIA 8856-2000 approved



SABELT UI-100 LONG SOCKS

Sabelt UI-100 Long socks in Nomex knitwear.

- FIA 8856/2000 approved



SABELT UI-400 TOP & PANTS

New mixed fabric with white stretch knitwear on front and back, net fabric on the side for a better breathability, new stitching for a better comfort.

- FIA 8856/2000 approved



SABELT UI-200 TOP & PANTS

Perspirant Air Tex with Micro Capsule menthol perfumed for fresh feeling.

- FIA 8856/2000 approved



SABELT BAGS & HOLDERS

BS-750

Medium size trolley bag with retractable towing handle and shoulders straps. Special shoes compartment. Sabelt Racing branded. Dimension: 31 x 68 x 34 cm



BS-750

BS-700

Expandable trolley case. Retractable towing handle. Sabelt Racing branded. Can be taken on board an aircraft. Dimension: 58 x 37 x 22/26cm



BS-700

BS-790

Very large bag with pull-out handle. Large base compartment. The main compartment has a large, square opening flap entry for easy loading and 2 separate end compartment. Dimension: 40 x 93 x 39cm

BS-220

Laptop bag with padded compartement. Can be fix easily on trolley's retractable towing handle. Compartment for CD-ROM/DVD. Sabelt Racing branded. Dimension 32 x 40 x 9cm

BS-300

Rucksack with padded compartment for laptop. Multi pockets. Sabelt Racing branded. Dimension : 50 x 36 x 15cm



BS-300



BS-220



BS-790

SABELT STEERING WHEELS

SW465

350mm in black suede Dish: 65mm

SW627

Formula Car 270mm in black suede

SW365

380mm in black suede Dish: 90mm

SW290

350mm in black suede Dish: 90mm

SW390

350mm in black suede Dish: 90mm

SW190

350mm in smooth leather Dish: 90mm

SW490

350mm in black smooth leather Dish: 90mm

SW635

350mm in black suede

SW 633

330mm in black suede Dish: Flat

Horn button for Sabelt steering wheels



SW465



SW627



SW365



SW290



SW390



SW190



SW490



SW635



SW633



BELL RS3 PRO

- FIA 8858 & Snell SA2010 Approved
- Lightweight Carbon/Kevlar®/Glass Shell
- Bell Racing "SV" Brake Visor Mechanism
- Advanced Aerodynamics
- Flame Resistant Nomex Lining
- Factory Fitted HANS® Posts Available



BELL SPORT 5

- FIA 8858 & Snell SA2010 Approved
- Lightweight Carbon/Kevlar®/Glass Shell
- Bell Racing "SV" Brake Visor Mechanism
- Efficient Ventilation System
- Flame Resistant Nomex Lining
- Factory Fitted HANS® Posts Available



BELL KC3-CMR

- SNELL CMR - 2007 Approved Compulsory for drivers under 18 in MSA racing from 2013
- Ultra Lightweight Carbon/Kevlar®/Glass Shell
- Based On The HP3 Helmet
- Anti-Fog Visor
- Bell Racing "SV" Brake Visor Mechanism
- Advanced Aerodynamics
- Forehead Air Intake



BELL RS-3K KART

The RS3-K helmet from Bell uses the same shell design as the popular RS3 Pro race helmet. Constructed from a lightweight composite shell the RS3-K is developed specifically for karting and carries the SNELL K2010 approval. Featuring advanced aerodynamics with a front chin spoiler and provides excellent ventilation through the powerful chin bar and top vents. An air intake duct for the top vents is available separately.



KODEN MS01 RACE

- Fibreglass/Kevlar
- Certified to SNELL SA2010.
- Suitable for MSA Car racing, Short Circuits, Karting, Sprints and Hillclimbs. Flameproof Nomex Liner & Kevlar retention strap.
- Sizes: M-57/58 L-59/60 XL 61/62 XXL- 63/64
- Colours: Matt White, Matt Black, Matt Neon Orange, Matt Neon Fluro



KODEN SK005 CMR

Exceptional Value SNELL CMR2007 approved helmet. THIS STANDARD IS REQUIRED FOR ALL MSA KART DRIVERS UNDER 18 FROM JAN 01 2013.

- Weight 1050 grammes +/- 50
- Removable washable lining
- Ventilation system
- Quick release visor
- Supplied with clear visor
- Lightweight fibreglass kevlar construction
- All CMR helmets are exempt from VAT
- Additional Dark Tint & Blue Blocker visors available seperately.



STAND 21 HANS DEVICE

Virtually unknown on the tracks 10 years ago, HANS® has become part of the basic safety gear for the race car driver just like a helmet or the fire proof suit.

Many serious injuries have been avoided and lives saved by HANS®.

Our HANS Devices are made by Stand 21 a predominant contributor in the popularization of the HANS® product. Stand 21 offers to the race car driver an exclusive and unique HANS® model line up



STAND 21 HI-TEC

- Weighs only 610 gms
- Available in 3 sizes
- 20 Degree for regular seating such as Saloon/GT/Rally car
- 30 Degree for more reclined seating position such as Prototype / Formula car / Radical
- Sliding tethers for greater freedom of head movement



STAND 21 CLUB HANS

A great value HANS device from with injection moulded thermo plastic.

- Weight: only 950 grm
- FIA Approved
- Sliding Tethers
- 20 Degree only



SABELT ANATOMIC NECK COLLAR

Sabelt anatomic neck collar for Karting and Club racing. Tapered rear, adjustable velcro.

- Black only

SABELT STANDARD NECK COLLAR

Sabelt Standard Neck collar for Karting and Club Racing.

- Black only
- One size

SABELT FG-420

Sabelts top of the range race glove, exceptionally comfortable and durable with new generation of digit leather on the palm for better grip & padded knockles for better comfort.

- Padded palm for sequential gearbox
- Diagonal sleeve cut for perfect fitting
- Preformed, external seams
- FIA 8856/2000 approved
- Made in Italy



SABELT FG-500

Very popular top end glove due to its high grip palm for better grip on the wheel.

- Coloured pam and stitching
- Preformed, external seams
- Special silicon material on the palm for better grip
- Diagonal sleeve cut for perfect fitting
- FIA 8856/2000 approved
- Made in Italy



SABELT FG-310

Great value reverse seam glove for all types of racing, rallying, karting or trackdays.

- Nomex Race Glove knitted fabric
- External seams and knuckle protection
- Suede on the palm
- FIA 8856/2000 approved
- Made in Italy



SABELT FG-300

An excellent quality mid range glove from Sabelt

- Nomex knitted fabric with suede on the palm
- Reinforced knuckle protection
- FIA 8856/2000 approved
- Made in Italy



SABELT FG-150

The most popular glove in the Sabelt range due to its excellent price and great quality and comfort. Suitable for all forms of Car racing, Karting and Trackdays.

- FIA 8856/2000 approved
- Made in Italy



PUMA PRO-FIT CAT

Features a fully encompassing sculptured construction of 180gram Knit Nomex on both back of the hand and throughout the interior of the hand, fingers, and palm. Sculptured pre-formed finger construction provides precise fitment and relaxed grip, while the Pittards Fireproof Digital leather tactile pads provide hard wearing and maximum grip within the interior of the glove.

- FIA 8856-2000 approved.
- Available in red, blue, black, and white.
- Sizes: 8-12.



PUMA PODIO RACE

The Podio is designed to provide maximum feel at all contact points between the drivers hand and the steering wheel. The rubberized palm delivers superior driver comfort and confidence.

- FIA 8856-2000 approved.
- Available in red, blue, black, and white.
- Sizes: 8-12.



SABELT NEW MECCA GLOVES

With knuckle protection, palm in goat leather, Velcro wrist fastening.

- Sizes: S - XXL



SABELT COTTON MECHANIC GLOVES

Cotton gloves medium weight. Black rubber penning for better grip on the palm.

- Sizes: One size



SABELT KEVLAR MECHANIC GLOVES

Flame/heat/cut resistant gloves, external Kevlar layer, inner cotton layer, 300°C heat resistant guaranteed.

- Sizes: One size



SABELT KEVLAR ARM PROTECTORS

Flame/heat/cut resistant arm protection 100% Kevlar arm protection, length 46cm.



SABELT TM-100 MECHANIC SUIT

New design suit with large pockets and reinforced knees

- Sizes: S - XXL



SABELT TM-300 MECHANIC SUIT

Featuring large pockets and reinforced knees.

- Sizes: S - XXL



SABELT RS-600

Mid Cut Race Boot with special top style and HEAT RESISTANT inner sole (made of fabric able to reflect the 95% of the heat).

Suitable for very hot cockpit or car with front engine compartment.

- FIA 8856-2000 approved
- Made in Italy



SABELT RS-300

- High boot
- Suede vamp, leather inserts
- Ultra-light sole.
- Ankle velcro fastening
- India rubber, resistant to oil & hydrocarbon
- FIA 8856-2000 approved
- Made in Italy



SABELT RS-400

In nomex fabric paired with camel leather. Ankle velcro fastening. India rubber, resistant to oil and hydrocarbon.

- FIA 8856/2000 approved
- Made in Italy



SABELT RS-200

- Race Boot. Suede vamp, leather inserts
- Ultra-light sole
- Ankle velcro fastening
- India rubber, resistant to oil & hydrocarbon
- FIA 8856-2000 approved
- Made in Italy



SABELT RS-100

Exterior in soft suede leather, interior in soft nomex fabric.

- 1 Velcro fastening.
- India rubber, resistant to oil & hydrocarbon
- FIA 8856-2000 approved
- Made in Italy



SABELT MS-300

Suede vamp with soft white leather inserts. Water repellent & anti slip sole.

- Nomex lining
- Velcro ankle fastening
- FIA 8856-2000 approved



SABELT MS-100M

Cordula and suede upper. High sole for a better grip and movement.



PUMA SL

These high quality soft leather race boots come from years of Formula 1 development from the leading drivers. They feature an asymmetrical lace pattern for a comfortable fit while a single Velcro strap helps to provide greater stability for a secure fit. The sole features a very thin anti-slip rubber construction that is resistant to oil and provides a very high level of feel and control.

- Soft Leather Upper
- Asymmetrical Lace Pattern
- Oil Resistant Anti-Slip Sole
- FIA 8856-2000 approved



PUMA FUTURE CAT RACE

Available in a choice of suede pigskin or smooth leather, the Future Cat race boots feature a mid/high cut to provide excellent ankle protection. The boot features asymmetrical lacing which helps to keep the foot clamped in place to improve driver feel on the pedals by minimising internal movement. An ultra thin sole gives a very high level of sensitivity and is high grip.

- Available In Suede or Leather
- Asymmetrical Lace Pattern
- High Grip, Ultra Thin Sole
- FIA 8856-2000 approved



Sabelt

SABELT TI-600

Features Sabelts unique New bi-directional fireproof elastic which is the only elastic that passes the FIA tests. It is the only elastic that can be used as a structural part of the suit. Extremely light weight and comfortable. External layer in very light semi-shiny Nomex fabric. Lightest suit in the Sabelt range

- FIA 3-Layer suit
- Internal layers in knitted interlock and light felt fabric
- New flat epaulettes compatible with Hans/Hybrid devices
- Lightest suit in the Sabelt range
- Weight 290gr/sqm



SABELT TI-520



- FIA 3-Layer suit
- External layer in semi-shiny nomex fabric
- Diamond S-DRY treated.
- New lighter internal layers in knitted honey comb textile S-DRY treated.
- Lighter and extremely perspirant.
- New flat epaulettes compatible with Hans/Hybrid devices
- Weight 300gr/sqm



SABELT TI-330



- FIA 3-Layer suit
- New external layer in soft shiny nomex / viscose fabric.
- Floating sleeves & inner collar in knitted interlock.
- New design & "Nascar" legs (regular legs also available please contact)
- New flat epaulettes compatible with Hans/Hybrid devices
- Weight 330gr/sqm.



SABELT TI-300



Made with Sabelts new generation shiny fabric for a superb stand out look.

- FIA 3-Layer suit
- New external layer in soft shiny nomex / viscose fabric
- Floating sleeves & inner collar in knitted interlock
- New flat epaulettes compatible with Hans/Hybrid devices
- Weight 330gr/sqm



SABELT TI-120



Traditional two colour popular suit for drivers needing enhanced sponsors logos.

- FIA 3 Layer suit
- External layer in soft nomex twill
- New flat epaulettes compatible with Hans/Hybrid devices
- Full floating sleeves for extra mobility
- Weight 380gr/sqm



SABELT TI-100



Excellent value suit extremely comfortable to wear and very popular in all categories of racing and rallying.

- FIA 3 layer suit
- New flat epaulettes compatible with Hans/Hybrid
- Weight 380gr/sqm
- Semi floating sleeves
- External layer in soft Nomex twill



PUMA TRIONFO



- FIA 3 layer suit
- 3 Layer Box Quilted Nomex
- Soft Satin Outer Layer
- Fully Floating Sleeves
- Classic Race Suit Design



RACE SUITS

All Sabelt Race Suits are FIA 8856-2000 Approved. They are all 3-Layer suits and offer excellent protection against flames and heat transmission. Sabelt suits are all made with the finest quality Nomex material to ensure maximum comfort and breathability to the driver. All Sabelt Racewear is produced in Italy to an extremely high standard. Sabelt will also make suits to order in whichever size / colour required, and are suppliers of Racewear and equipment to many professional race teams such as Ferrari F1, Redbull F1, Citroen WRC, Aston Martin GT team and many many more.

Please call us on 01327 858 349 for more details.

mode
raceWear

Sabelt[®]



KODEN
HELMETS

PRODUCT CATALOGUE

Call: 01327 858 349 Visit: www.moderacewear.com