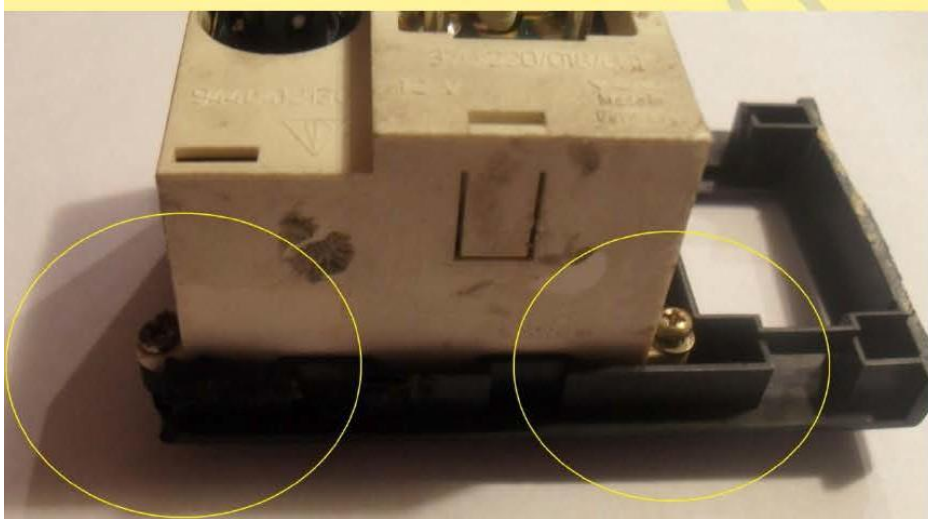


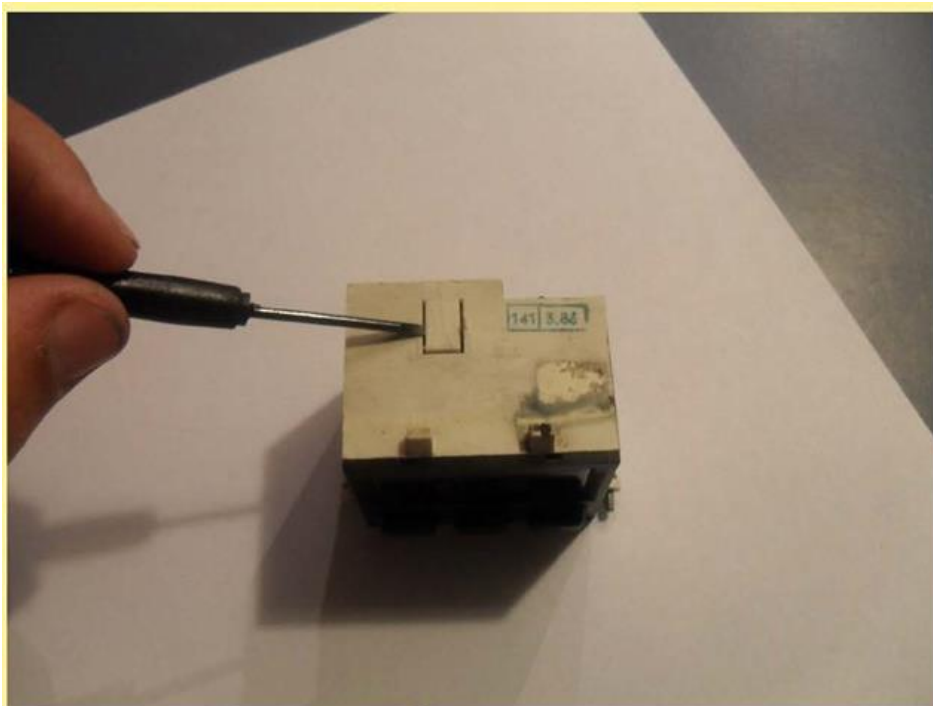
Instructions for Replacement of LCD Display on late 944 Clocks, Same Procedure for 968 Ambient Displays. Only Difference is there is only one edge strip for the LCD Ambient Display, Thanks to Mr Whitesell for the text and Info, buy display repair kits <https://www.partworks.de/partworks-de/Porsche/968/Display-fuer-Porsche-968-Aussentemperaturanzeige-ATA.html>

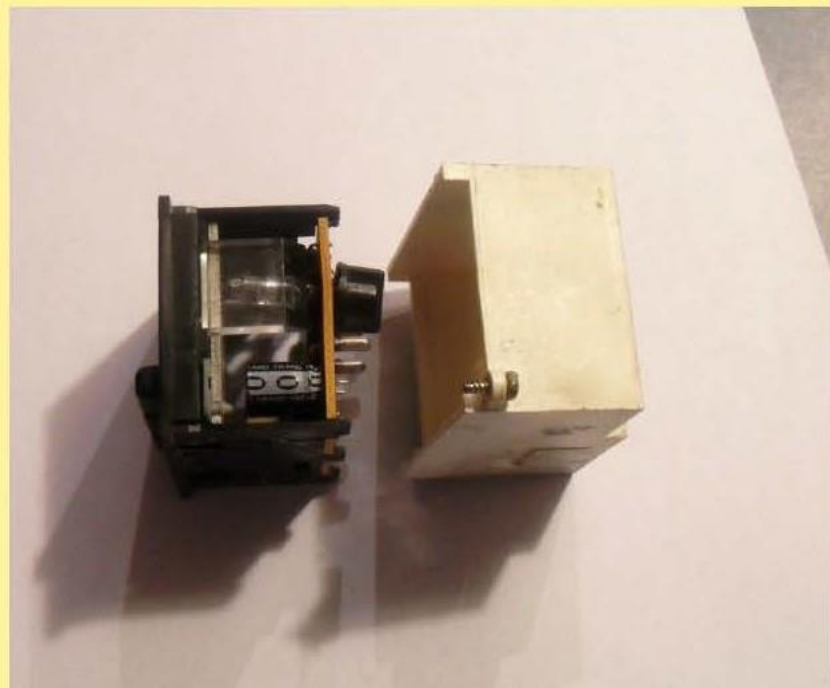
Make sure you remove the 2 side screws prior to trying to remove from the plastic face. Shown below in yellow.



After clock is removed. You will need to separate the black face from the white case. This is done by using a skinny flat screwdriver or similar tool.

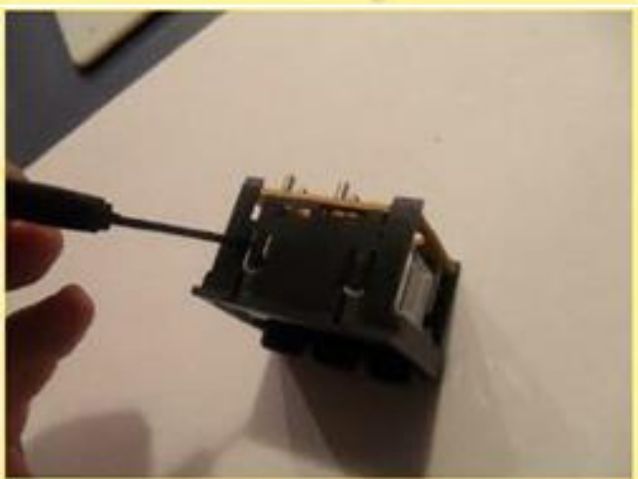
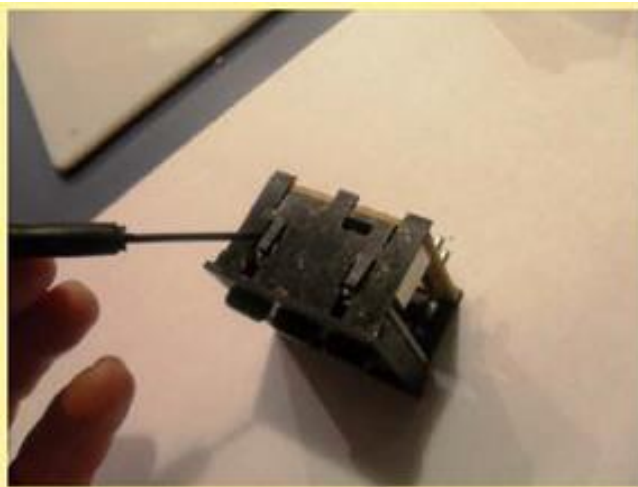
There are 2 clips (one on top and one on bottom) in the white case that have to be lifted just enough to allow the front to slide out. These are pretty durable if you're careful.



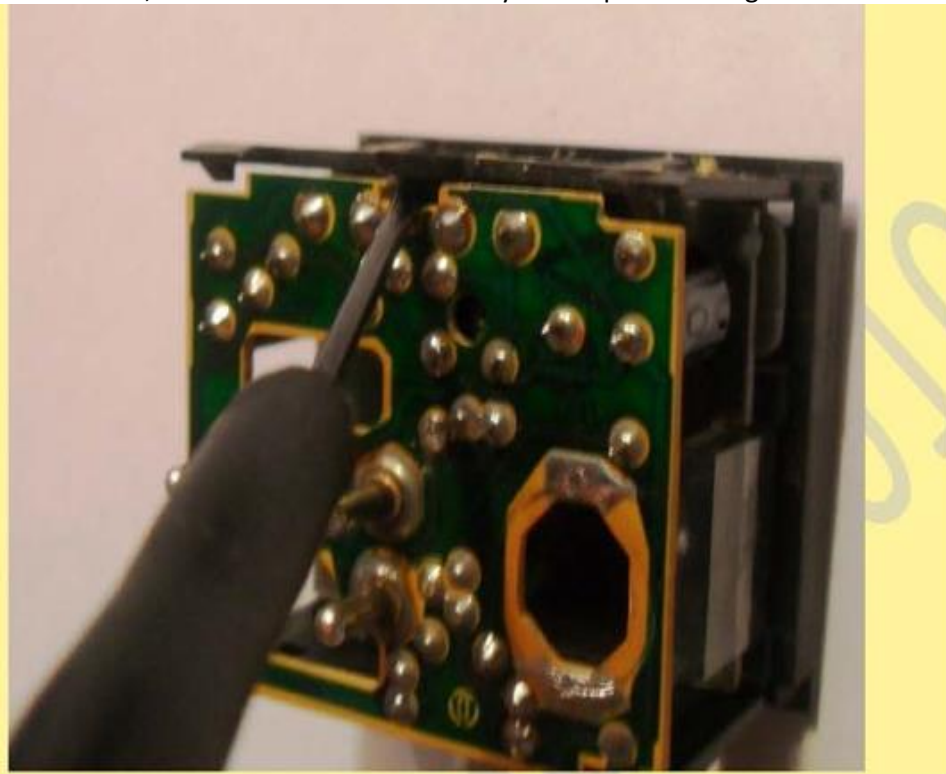


Carefully separate the unit

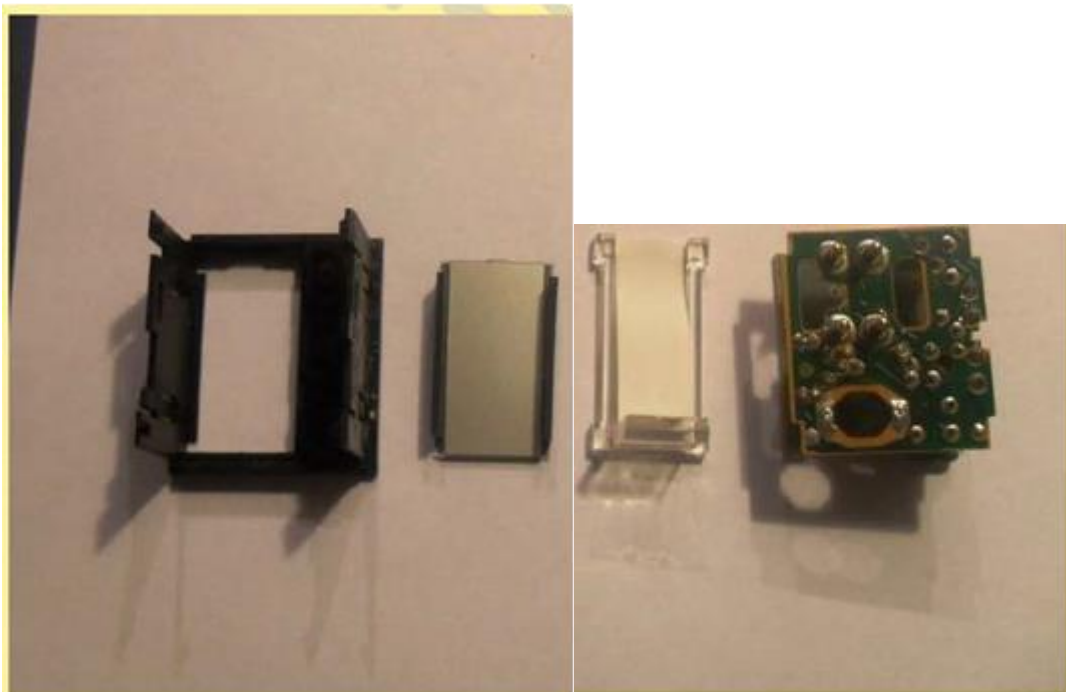
Then release the 4 clips that retain the LCD in the sides of the black unit



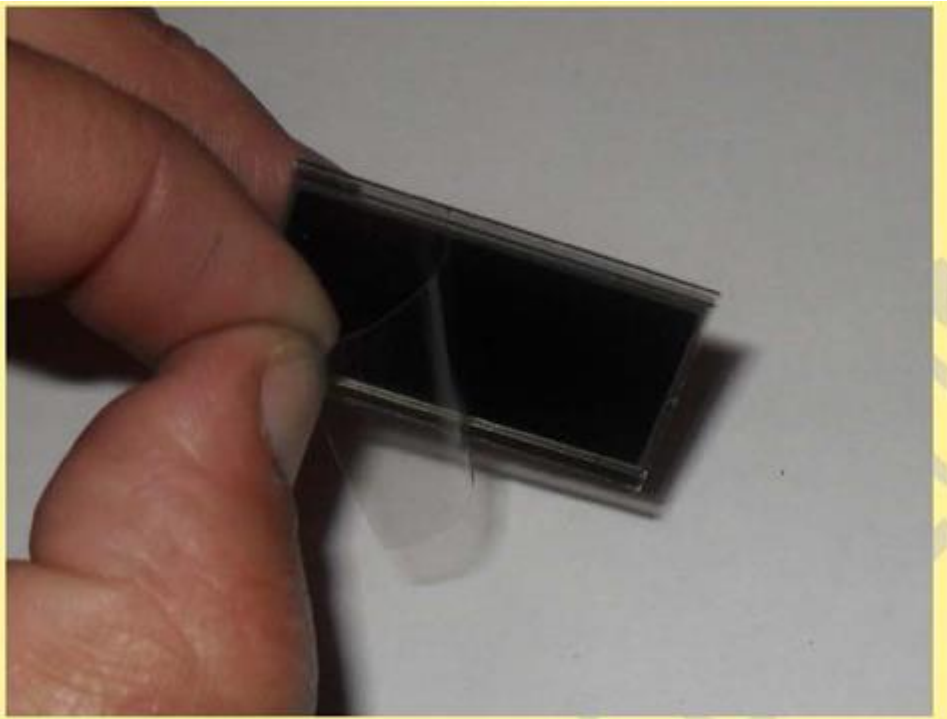
The unit is not quite ready to release the boards, you will need to work the "prongs" that retain the rear circuit board, take care with this as the 30 year old plastic is fragile



Carefully slide out the boards and lay out in a clean dry area for reassembly



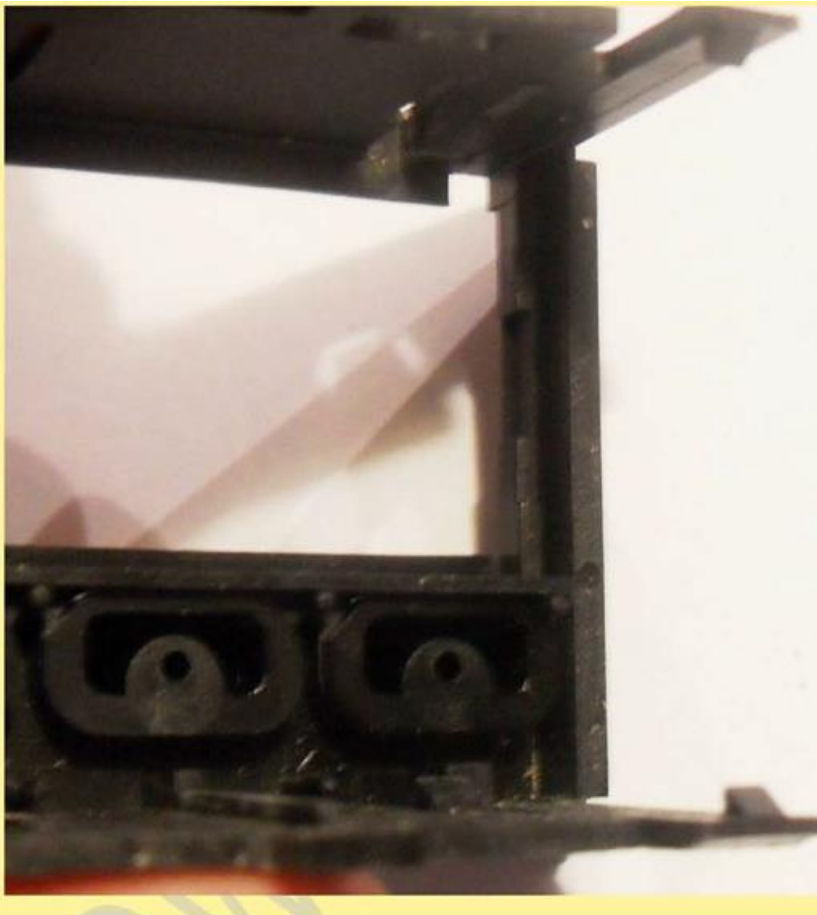
Carefully remove the protective film from front and back of LCD



Note that the LCD has a "nub" on one side. This nub inserts into the housing only one way.



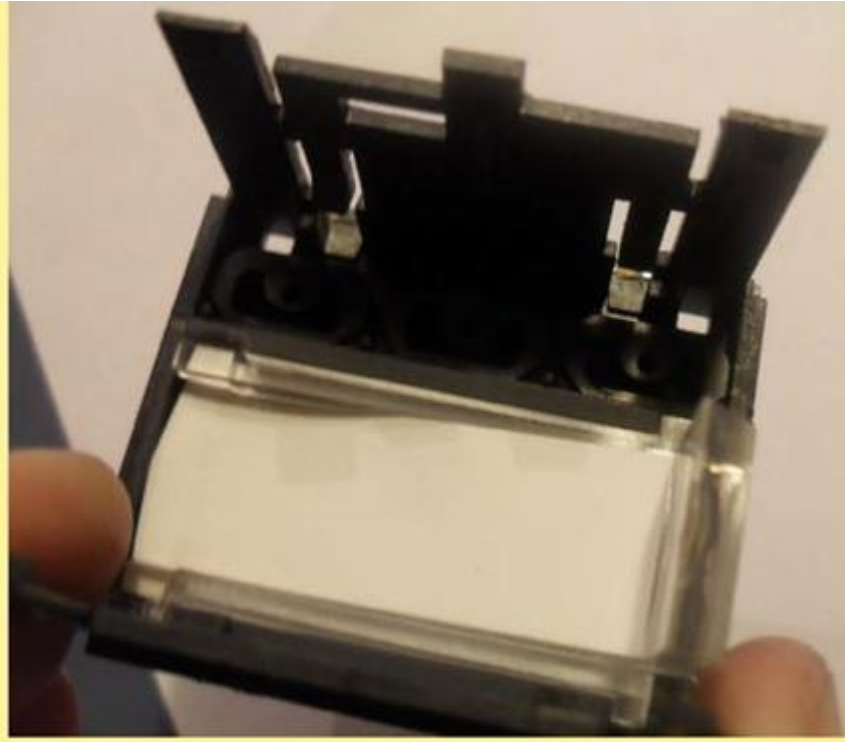
The housing has a "notch" to allow the LCD to seat fully forward, If the LCD doesn't want to sit flat, this is probably your problem.



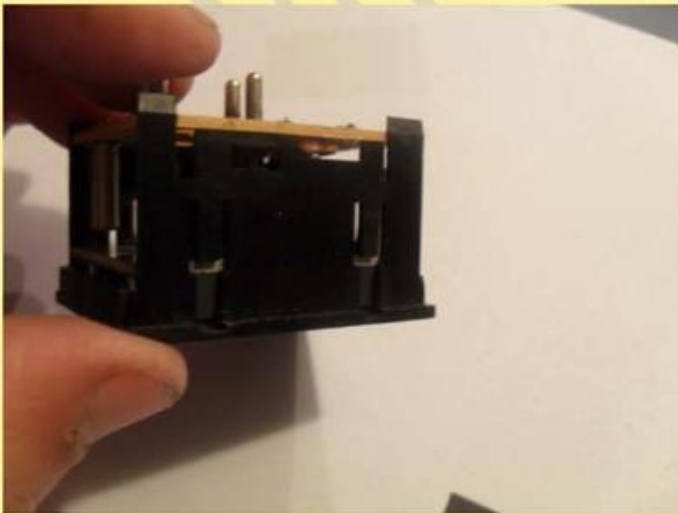
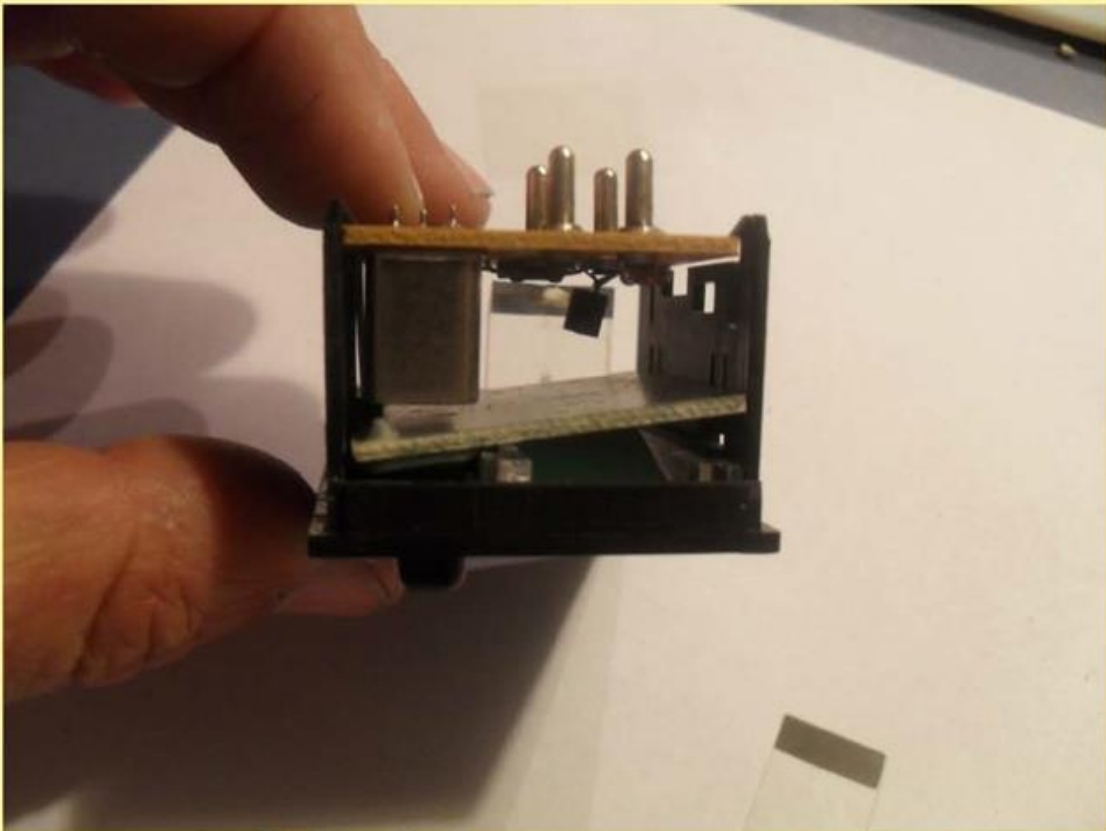
Lay the screen in position and center the connector block as shown



Next put the plastic deflector in place and insert the other connector block in the gap. Do make sure you get the paper back in as it does serve a purpose in light transmission .



Now comes the fun part, It's not difficult to reinstall the boards, but the key is all the points have to contact the LCD and the board. I start by installing the button side first and pushing the black prongs into place (the ones we released the pressure from earlier on the side). This part you only have one carbon connector strip for the ambient display



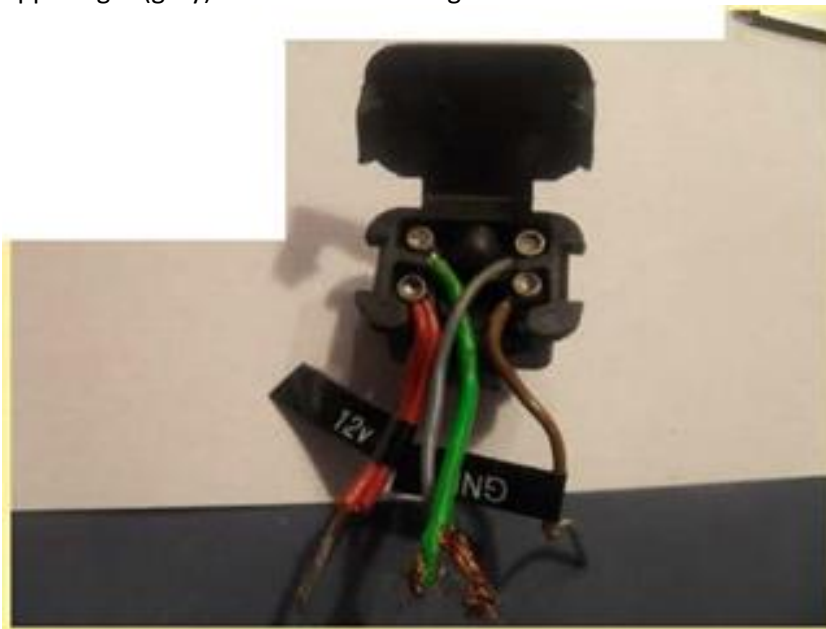
Next, you'll have to repeat the process on the other side. This must be done carefully as you can damage the board. It should look like this. **NOT NEEDED FOR 968 Ambient Display**

Re-engage the Rear Board retaining prongs



You will want to apply power to check the function of the LCD, you can also install the LED for the clock at this stage. Please note that the LED can only work with current flowing one direction, so if it will not light twist it 180 degrees. Be gentle, it is possible to break the board (ask me how I know).

Below is a fixture I use to test. Please note that you need to apply negative to the lower right pin (brown), and the positive to the lower left (red) to make the clock work. You will need to apply the positive to the upper right (grey) to check the back light.



I'd like to say assemble it now, but rarely do you get it on the first shot. Quite often the contacts are not quite touching, It may look something like this.



Lower section of LCD is not making contact on this one. Sometimes the plastic strip behind the LCD gets in the way. See bottom of page 4 in the center. This piece can easily interfere with the connectors. You can leave it out as once the unit is installed back in the face plate of the dash, you will not see the edges and it will not make much difference when installed.

The carbon/rubber contact strip may not be connecting correctly and will need a little realignment

Re assembly is simply sliding the main unit back into the white housing. Do check one more time before installing in the car as it's easy now.