

PORSCHE

Service Information

Technik

'93



968 CS

Preface

The 968 CS is available within the 968 series with reduced specification in order to provide even more sports-car dynamism.

- Sales designation - 968 CS (Clubsport)
- Introduction date - As of 10/'92
- Sales versions - For Europe, Japan, Australia
- Engine - Standard as in 968
- Transmission - Standard as in 968, **only** six-speed manual transmission
- Bodywork - **only** Coupé, two-seater (without rear seat unit)

Comparative statements in this brochure refer to the standard 968 Coupé, model year '93

The information in this brochure was correct at the time of going to press on September 21, 1992.

PORSCHE

Service Training Center

Contents

	Page
Engine	
Modifications	1 - 1
Power transmission	
Modifications	3 - 1
Chassis	
Modifications	4 - 1
Bodywork	
Modifications	5 - 1
Specification	
Colors	6 - 1
Equipment features	6 - 2
Optional extras possible	6 - 4
Electrical system	
Modifications	9 - 1
Radio package	9 - 2
Survey	
Number ranges	0 - 1
Technical data	0 - 2

1 Engine

Engine M44/43 3.0 liters displacement, 176 kW (240 HP), as in standard version

Modifications

- Alternator (90 A) without ram-air ducting
- One electric cooling fan
- For reasons of styling the cover of the fuel collection pipe, the intake system and the valve cover are sand-blasted.

3 Power transmission

Six-speed manual transmission G44 00, as in standard version
Dual-mass flywheel as in standard version

Modifications

- PVC coating on clutch bell-housing deleted.
- Simplified protective panel on clutch bell-housing

4 Chassis

...

.....

.....

5 Bodywork

Modifications

- Melded insulating mats only in doors.
- Insulating mats without heavy-duty laminating sheets.
- No insulation on luggage compartment floor.
- Airbag system deleted.
- Oddments box in center console without clock.
- Cassette holder deleted, replaced by oddments tray.
- Door trim with stowage compartment and speaker panel.
- Door locking knobs without light-emitting diodes.
- Bucket seats as in 911 Carrera RS with fabric covers (cord), black, backs of seats painted same color as car body.
- Rear seat unit deleted, repl. by simplified rear luggage space, with retaining eyes for luggage net.
- Luggage compartment cover deleted.
- Welded brackets for rear 3-point seat belts deleted.
- Clothes hooks deleted.
- Plastic styling panels in engine compartment deleted.
- Aluminum engine under-guard deleted.
- Rear spoiler painted same color as car.

6 Specification

Paintwork colors

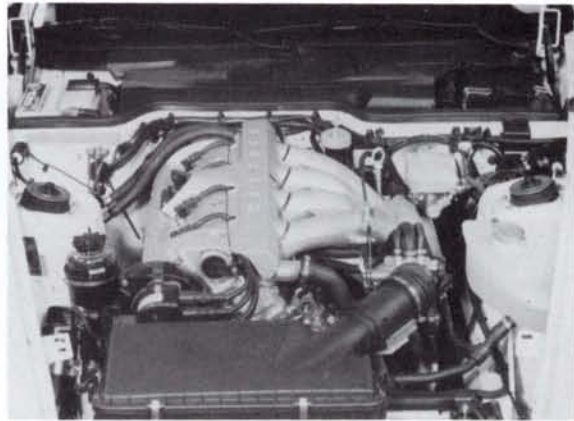
Sales designation	Color shade	Porsche paint no.
G 1	guards red	80 K
P 5	grand prix white	908
X 4	speed yellow	12 G
F 2	maritime blue	38 B
A 1	black	741

Interior colors

Black artificial leather upholstery with black carpeting.

Equipment features**Engine compartment styling**

For reasons of styling the cover of the fuel collection pipe, the intake system and the valve cover are sand-blasted.



92/100

Steering wheel

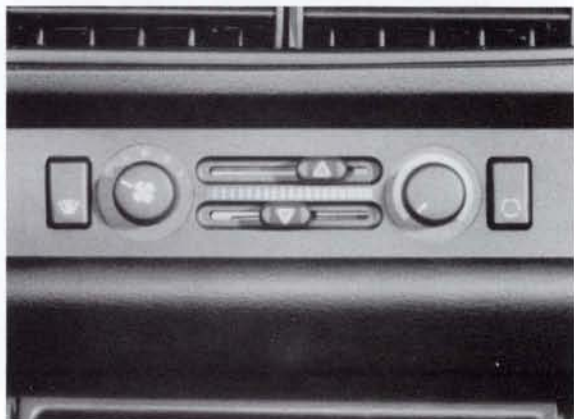
Three-spoke leather-covered steering wheel, 360 mm diameter.



92/101

Heating/ventilation

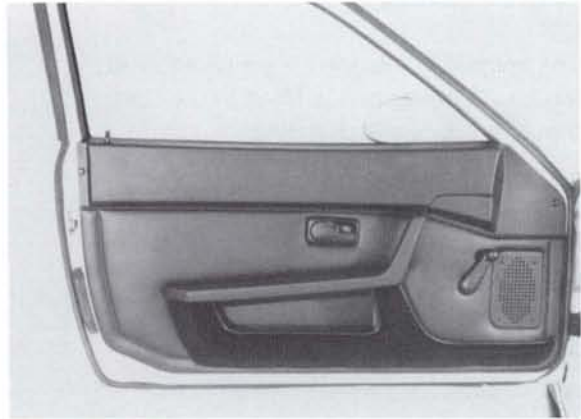
Control switches for the electronic heating and ventilation system.



92/95

Door trim

With stowage compartment and speaker panel.



92/108

Bucket seats

Seat inclination can be set to various positions at the front and rear anchorage points.



92/96

Rear luggage space

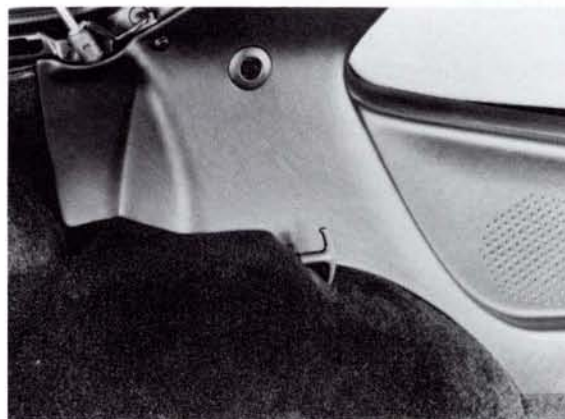
With carpeting and retaining eyes for luggage net.



92/109

Tailgate release

The tailgate is released via a cable inside the car. A cover cap is fitted in the rear trim instead of a lock cylinder.



92/110

Optional extras possible

The following optional extras are available for the 968 CS (Clubsport):

P 10	Radio package
P 030	Sports package (M 030, limited-slip differential)
Security package	Central locking system, alarm system, theft protection for wheels
M 220	Limited-slip differential
M 381	Basic man. adjustable left seat, all-fabric / artificial leather black upholstery
M 382	Basic man. adjustable right seat, all-fabric / artificial leather black upholstery
M 573	Air conditioning (with higher-capacity battery, 63 Ah and twin fan)
M 650	Lifting roof

9 Electrical system

Modifications

- Electrically adjustable door mirrors deleted, replaced by manually adjusted mirrors.
- Power windows deleted, replaced by manually operated windows (except Japan).
- Rear window wiper deleted, rear window with hole and cover cap.
- Roof antenna deleted.
- but with interference suppression, wiring and antenna cable.
- Central locking system deleted.*
- Alarm system deleted.*
- Ext. door handle without microswitch.
- Clock as in 944.
- 50 Ah battery with small terminal cover.
- Standard cable harness deleted, replaced by basic cable harness.
- Windshield washing nozzles not heated.
- Engine compartment illumination deleted.
- Electric tailgate release deleted, replaced by cable release.
- Luggage compartment lamp deleted.
- Ext. temperature display deleted.
- Heating system without automatic temperature control.

* Observe version for specific countries!

Radio package

A radio package (P 10) is available for the 968 CS.

The radio package includes:

- CR Radio "Paris RCR 41" (2 x 26 Watt output *)
- The radio comes with a fixed four-figure code.
- Roof antenna with amplifier
- 2 dual-cone door speakers (4 Ohm impedance, 25 Watt capacity)



92/102

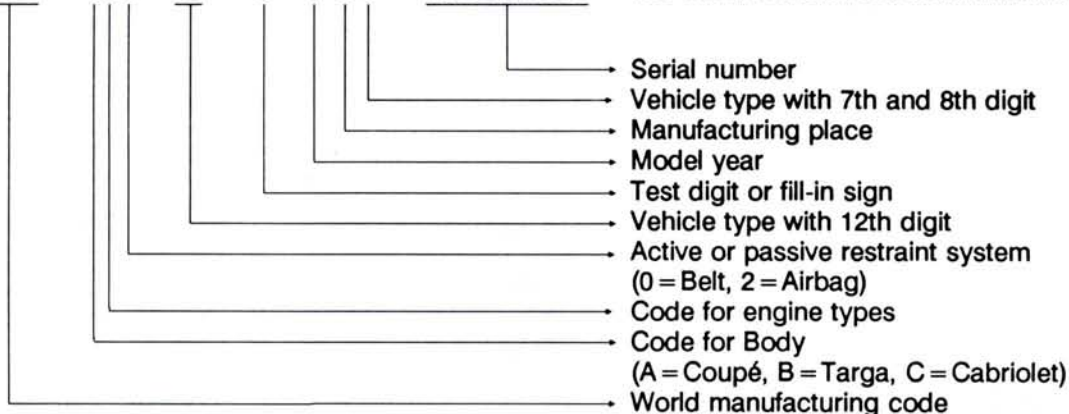
* For Italy, Spain and Great Britain the radio "Paris RCR 41" is not planned.
Wiring for subsequent radio installation is available for these countries with M 451.

0 Technical Data

Number Range

Vehicle Ident. No.:

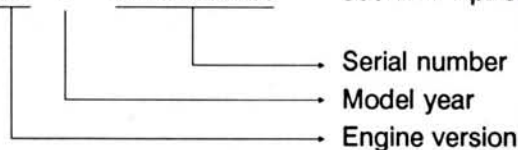
WP0	ZZZ	96	Z	P S 8	00001...05000	968 RoW Coupé
WP0	ZZZ	96	Z	P S 8	30001...35000	968 RoW Cabriolet
WP0	ZZZ	96	Z	P S 8	15001...20000	968 RdW Clubsport
WP0	AB2	96	©*	P S 8	20001...25000	968 USA / Canada Coupé with Airbag
WP0	CB2	96	©*	P S 8	40001...45000	968 USA / Canada Cabriolet with Airbag



©* = Fill-in sign, could be 0 ... 9, or X!

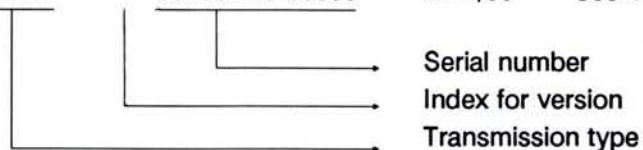
Engine Numbers

Number Range	Vehicle Type	Engine Type	Engine Data
42 P 00001...20000	968 Manual trans.	M 44/43	3.0 I, 176 kW/240 PS
42 P 50001...60000	968 with Tiptronic	M 44/44	3.0 I, 176 kW/240 PS



Transmission Numbers

Number Range	Transmission Type	Vehicle Type
G 4400 1 000001...9 99999	G 44/00	968 6 speed
G 4400 2 000001...9 99999	G 44/00	968 6 speed worldwide with limited slip diff.
A 4400 1 000001...9 99999	A 44/00	968 4 speed Tiptronic



968 CS technical data deviating from standard version

Battery capacity	V/Ah	12/50
Alternator output	W/A	1260 /90
Vehicle height	mm/in	1255/49.4
Track width, front	mm/in	1457/57.36
Track width, rear	mm/in	1445/56.88

Weights to DIN 70020

Curb weight		
Front	kg/lbs	640/1411
Rear	kg/lbs	680/1499
Total	kg/lbs	1320/2910
Perm. gross weight	kg/lbs	1570/3460

Dr.Ing.h.c.F.Porsche
Aktiengesellschaft
Postfach 1108

D - 7140 Ludwigsburg

Service Division
Technical Service Department
Edited by Service Training Center

Printed by Jung & Kienle 7000 Stuttgart 61

This brochure is printed on paper bleached without the use of chlorine to protect the environment.

10/1992

Pictures, descriptions and drawings serve exclusively the presentation of the text.
We cannot accept liability for completeness or conformity of the contents of this publication
with the pertinent legislative regulations.
Subject to changes without our prior notice on the basis of engineering progress.
Can not be reproduced in part or in whole without prior written permission from Porsche AG, Stuttgart, Germany.

Copyright by Dr.Ing.h.c.F.Porsche Aktiengesellschaft .

Printed in Germany